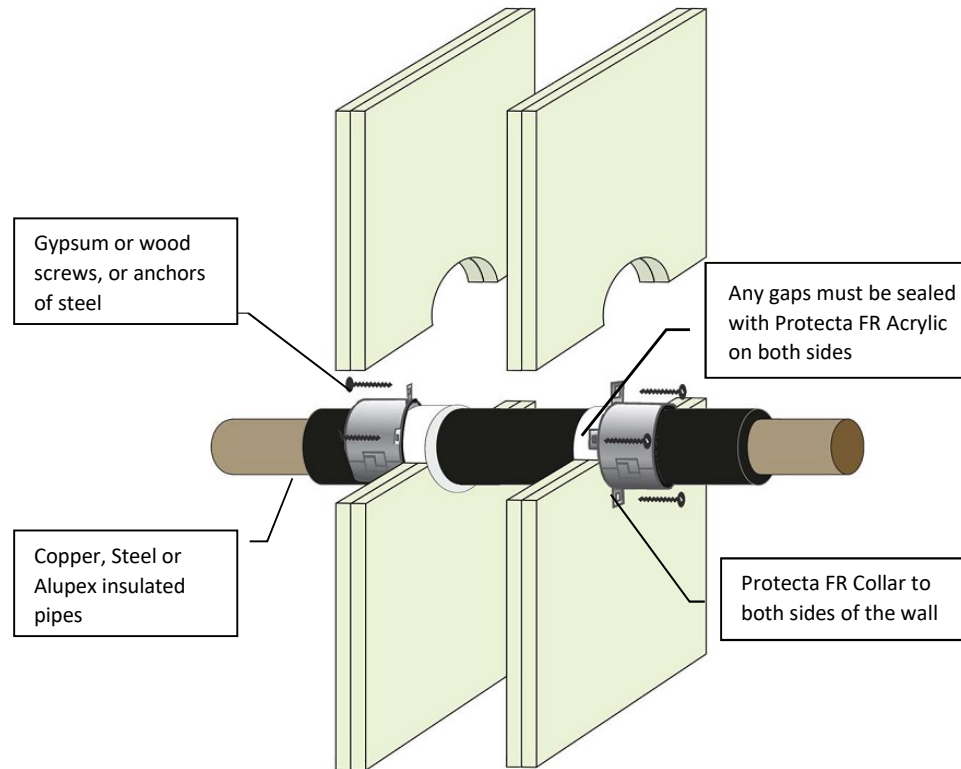


### Installation Instructions

1. For sealing pipes, a pipe collar is installed on both sides of the wall.
2. Before fitting the pipe collar ensure that any gaps between the pipe and the separating element are sealed. Gaps between the pipe and the construction below 8mm must have a bead of Protecta FR Acrylic to cover the opening, and for gaps 8mm or above, the seal must be plugged with FR Acrylic to the depth of the plasterboard.
3. Place a pipe collar around the service penetration (pipe) and ensure that the fixing lugs are positioned tightly to the surface of the wall so that the anchors/fixings can be inserted fully.
4. Where the surface is uneven, apply a sealing bead of Protecta® FR Acrylic between the wall and the pipe collar.
5. Attach the pipe collar with steel screws, anchors or fixings that are suitable for the number of boards that form the wall.
6. On sites where the penetration size is greater than the pipe diameter and/or the pipe is on an angle an oversized collar can be used. Protecta® FR Collars are tested 'oversize', i.e. the internal diameter of the collar can be larger than the pipe.

## Protecta FR Collar - Plasterboard Wall Metal Pipes (Steel, Copper, Alupex) Combustible (Elastomeric, Foam) or Non- combustible Insulation



Over-sized collars of any dimension approved, subject to:  
Max angle 45°  
Max FRR -/120/120  
Max collar size 160mm

As a part of our policy of on-going product development and testing, we reserve the right to modify, alter or change product specifications without giving notice. All information contained in this document is given in good faith and is provided for guidance only. Any drawings provided are for illustrative purposes only. As Polyseam has no control over the methods or competence of installation and of prevailing site conditions, no warranties, expressed or implied, is intended to be given as to the actual performance of the product mentioned or referred to herein and no liability whatsoever will be accepted for any loss, damage or injury arising from the use of the information given.

<b>Products</b>	Protecta FR Collar Protecta FR Acrylic
<b>Application</b>	Fire stopping of metal pipes with combustible or non-combustible insulation in flexible walls.
<b>Construction</b>	Minimum wall thickness of 100 mm and comprise steel studs or timber studs lined on both faces with minimum 2 layers of 12.5mm thick board.

### Fire & Sound classification

Copper or mild steel pipes, diameter up to 54mm:

With 9-50mm Elastomeric or non-combustible insulation with 50mm FR Collar up to 110mm or 60mm FR Collar up to 160mm FRR -/90/60

With 25mm Phenolic Foam or non-combustible insulation with 50mm FR Collar up to 110mm FRR -/120/60

With 20mm PE foam or non-combustible insulation with 50mm FR Collar up to 110mm FRR -/120/90

Alupex pipes, diameter up to 75mm:

With 9-50mm Elastomeric or non-combustible insulation with 50mm FR Collar up to 110mm or 60mm FR Collar up to 160mm FRR -/90/60

ZERO smoke leakage up to 200Pa with 10mm FR Acrylic

Sound reduction (seal only) STC 58

Sheet size: **A4**  
Drawn date & no: 28/7/20

Scale: **NTS**  
Drawn by: K.B